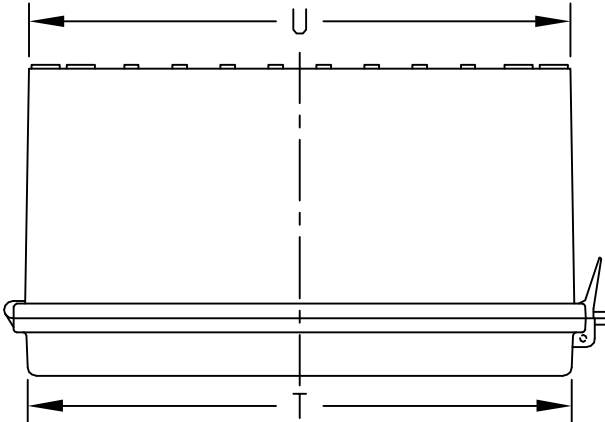
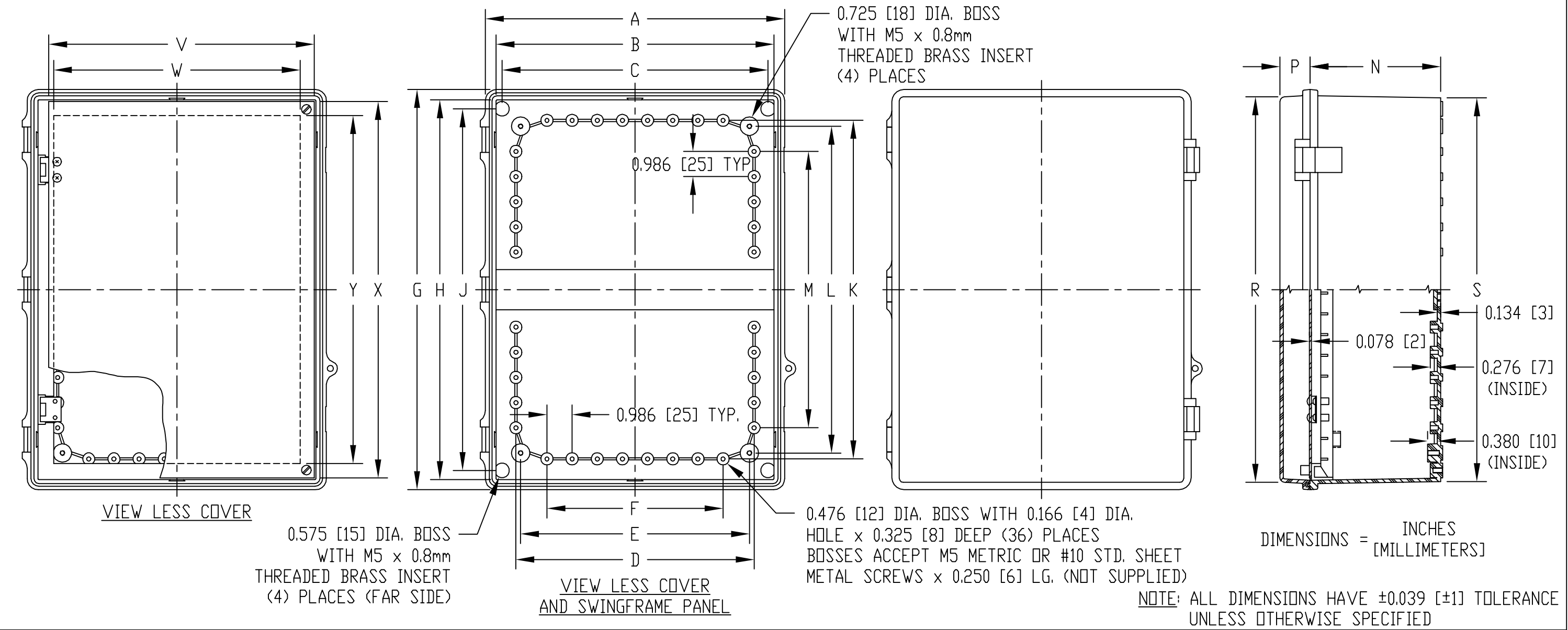


PART NAME	NON-METALLIC ENCLOSURE (STYLE E)	PART No.	NBE-10547 AND NBE-10567
-----------	----------------------------------	----------	-------------------------

<p>MATERIAL:</p> <p>SOLID BODY & COVER _____ ABS/PC BLENDED PLASTIC UL94-5VB FLAMMABILITY RATING</p> <p>CLEAR COVER _____ POLYCARBONATE PLASTIC UL94V-0 FLAMMABILITY RATING UV STABILIZED</p> <p>PANEL _____ 0.078 THICK ALUMINUM</p> <p>LATCHES & HINGES _____ NON-METALLIC</p> <p>WALL MOUNTING BRACKETS _____ STAINLESS STEEL</p>	<p>FINISH:</p> <p>BODY _____ LIGHT GRAY</p> <p>COVER _____ LIGHT GRAY OR CLEAR</p> <p>PANEL _____ ANODIZED</p> <p>COVER INCLUDES GRAY POLY-URETHANE GASKET.</p> <p>UNIT COMES COMPLETE WITH (4) WALL MOUNTING BRKTS. & (4) M5 x 10mm LG. TRUSS HD. MACHINE SCREWS (NOT SHOWN)</p>		<p>INDUSTRY STANDARDS:</p> <p>UL508 TYPE 1, 2, 4, 4X INDOOR, 12 & 13</p> <p>NEMA TYPE 1, 2, 4, 4X, 12 & 13</p> <p>IEC529-IP65</p> <p>AIR AND MOISTURE VENTS, GALVANIZED STEEL INTERNAL PANEL AND STAINLESS STEEL LOCKING HASP ARE NOT INCLUDED, BUT CAN BE PURCHASED SEPARATELY.</p>
---	--	---	---



PART NO.		DIMENSIONS																					
SOLID COVER	CLEAR COVER	A	B	C	D	E	F	G	H	J	K	L	M	N	P	R	S	T	U	V	W	X	Y
NBE-10547	NBE-10567	11.727 [298]	10.894 [277]	10.424 [265]	9.335 [237]	8.969 [228]	6.902 [175]	15.680 [398]	14.877 [378]	14.167 [360]	13.265 [337]	12.801 [325]	10.828 [275]	5.110 [130]	1.185 [30]	15.105 [384]	15.035 [382]	11.147 [283]	11.090 [282]	10.400 [264]	9.659 [245]	14.740 [374]	13.635 [346]